

Guide to the TreeAge Pro Interface

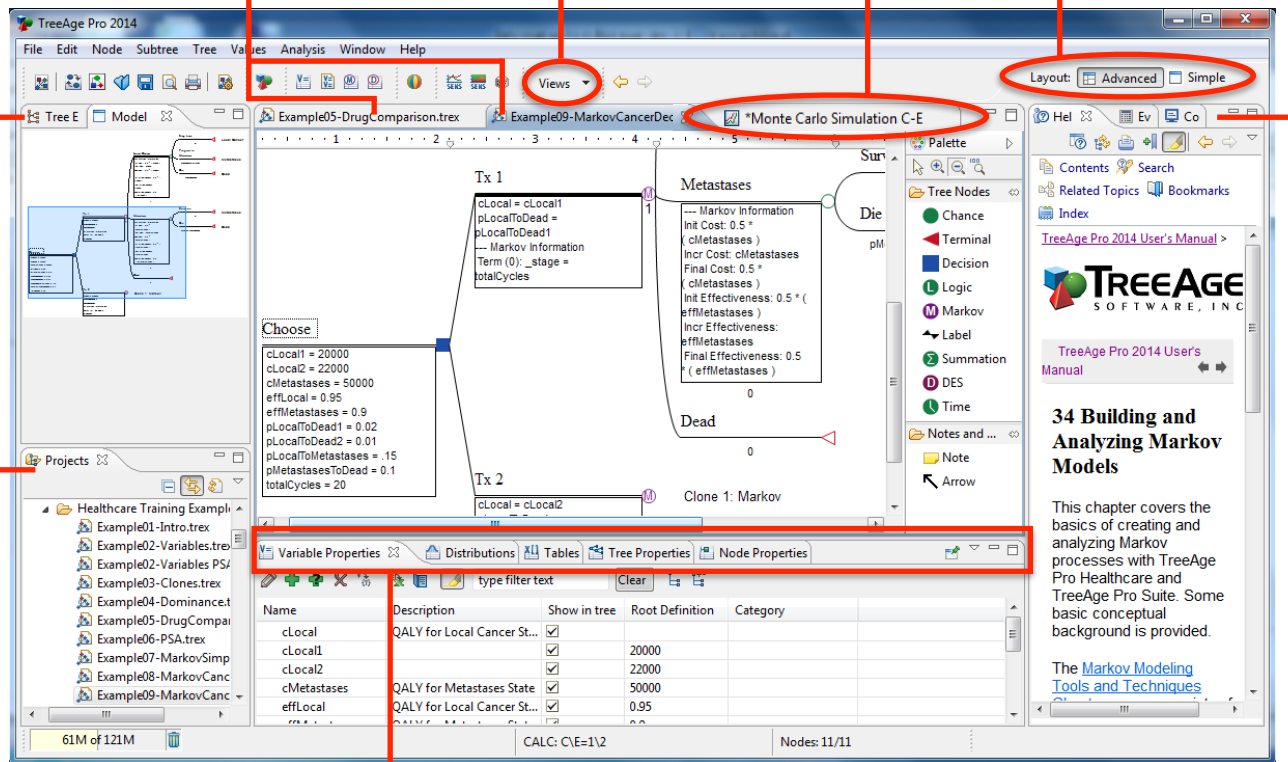
Use **Model Overview** and **Tree Explorer** to explore large models

Tree Editor for building and editing models

Views menu for access to all elements of the user interface

Analysis output

Select a **layout / perspective** to change the interface



Find **Example Models** and organise your files via the **Projects View**

Model Input Views for editing numerical components of the model

Electronic help and other tools like the Evaluator, Console, and Newsfeed



Quick Reference Guide

34 Building and Analyzing Markov Models

This chapter covers the basics of creating and analyzing Markov processes with TreeAge Pro Healthcare and TreeAge Pro Suite. Some basic conceptual background is provided.

The [Markov Modeling Tools and Techniques](#)

Inside:

- Guide to the TreeAge Pro Interface
- Find Useful Functions



Meeting all your modeling needs

Contact Us

<http://www.treeage.com>

sales@treeage.com support@treeage.com

(+1) 888-TreeAge -or- +1 413-458-0104

One Bank Street, Williamstown, MA, 01267 USA



Scan for online demos

Find Useful Functions

Configure the model for calculation, outcomes and display, via **Tree Preferences**

Analyze your model

Rollback/Calculate your model

Access **Electronic Help and **keyboard shortcuts****

Double click to **maximise the tab and repeat to resize**

Zoom in/out of the Tree Editor. Select arrow to exit zoom.

Minimise palette

Minimize pane

Expand pane

Views list

- Clone Masters/Copies
- DES Info
- Diagram Properties
- Distributions
- Evaluator
- Markov Info
- Model Overview
- Model Validation
- News Feed
- Node Properties
- Player Design
- Player Model
- Probability Wheel
- Projects
- State Bindings
- Tables
- Tracker Modifications
- Tracker Properties
- Tree Explorer
- Tree Properties
- Variable Definitions
- Variable Properties
- Console
- Error Log
- Search
- Welcome
- Other

Right click > 'Detach' any tab to change to a **floating window**

Hover over any boarder between panes and then click-drag to **Resize**

Drag and drop new nodes and notes into the Tree Editor

Expand one tab

Rearrange tabs by selecting any tab, holding down the left mouse key and dragging

34 Building and Analyzing Markov Models

This chapter covers the basics of creating and analyzing Markov processes with TreeAge Pro Healthcare and TreeAge Pro Suite. Some basic conceptual background is provided.

The [Markov Modeling Tools and Techniques](#)

Variable Properties Toolbar

All model input view toolbars have similar properties

- Add variable
- Add several variables
- Delete variable
- Edit variable
- Convert variable to a tracker
- Send a list of variables to Excel
- Create a variables report
- Highlight a variable in the Tree Editor
- Filter the variables based on text input
- Group variables by Categories
- Edit Categories and assign to variables